

Location

Older than Berlin itself and located between the arms of the rivers Dahme and Spree, Köpenick has kept its small-town touch. At the same time the bustling Berlin city center is within easy reach via public transport.

Our conference venue, the Penta-Hotel Berlin-Köpenick, is situated directly at the banks of the river Dahme, with a view of the old town and Köpenick castle. Accommodation is available at the venue itself, at the Best Western hotel right next door, or at any of the small hotels and guesthouses in the old town.

The branching network of rivers, lakes and channels in and around Köpenick provides a perfect set for our dinner boat trip which will include a crossing of the Müggelsee – a lake that many of you may remember as the southern boundary condition of the FEFLOW Demonstration Exercise model.



pentahotel Berlin-Köpenick

Grünauer Straße 1
12557 Berlin

Phone: +49 (0)30 654 790
Fax: +49 (0)30 654 795 55

info.koepenick@pentahotels.com

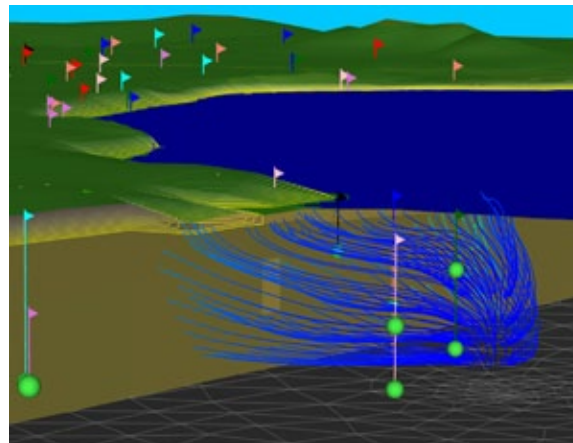


Key Dates

Abstract submission	January 31, 2012
Abstract acceptance	February 29, 2012
Paper submission	July 31, 2012
FEFLOW Basics course	Aug. 30 - Sept. 1, 2012
Preconference excursion	September 2, 2012
Conference dates	September 3-5, 2012
Topical workshops	September 6-7, 2012

The latest information on the conference can be found on

www.feflow.com/feflow2012



Organizer

DHI-WASY GmbH
Waltersdorfer Str. 105, 12526 Berlin, Germany

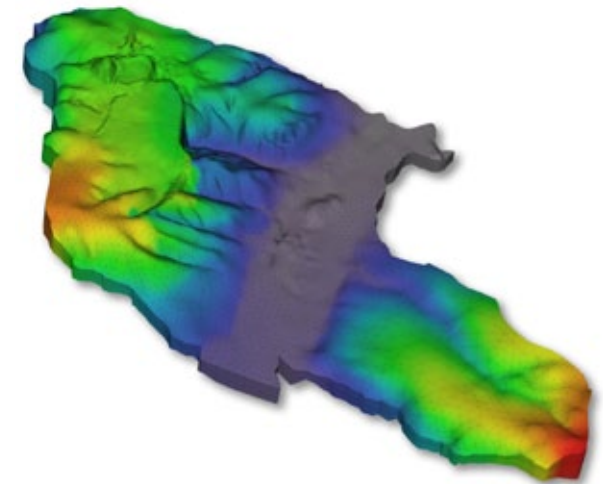
Phone: +49 (0)30 67 99 98-0
Fax: +49 (0)30 67 99 98-99

mail@dhi-wasy.de

www.feflow.com



3rd International FEFLOW® User Conference



September 3-7, 2012

Berlin, Germany



First Circular

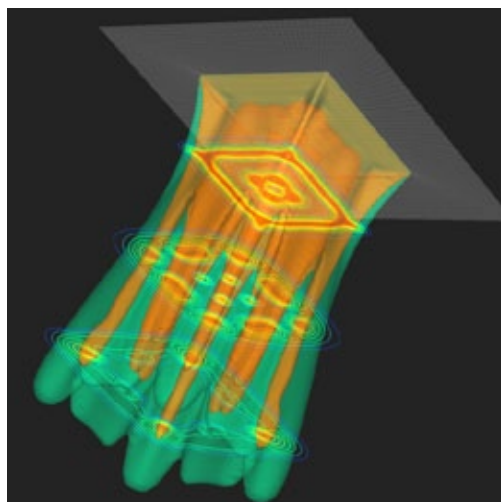
Dear FEFLOW Users,

Building on the success of the previous FEFLOW user conferences, FEFLOW 2012 will feature numerous opportunities for exchanging ideas and improving your modeling skills. Highlights include:

- Keynote presentations of trends and latest ideas in numerical modeling of water resources and related fields
- User presentations showcasing ways in which FEFLOW is applied to challenging problems
- Product updates
- Opportunities to meet with DHI-WASY partners and FEFLOW users worldwide
- Software demonstrations
- Training courses and workshops

It is our hope that many of you will be able to participate!

The Organizing Committee



Conference Topics

Groundwater management: regional flow, water allocation, well-head protection

Mine-water management: dewatering, flooding, tailings dams, re-injection, solution mining

Contaminant transport: remediation, risk assessment, multispecies simulation, chemical reactions

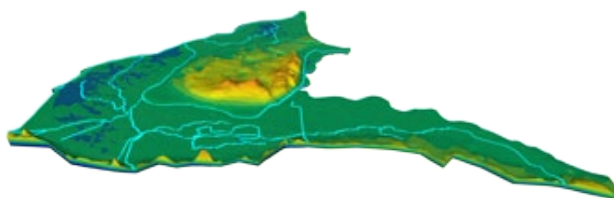
Geothermics: open-loop systems, closed-loop systems, ATEs, deep geothermics, geothermal use of mine voids

Porous-media modeling: unsaturated flow, industrial material development, new fields of application

Density-dependent flow: saltwater intrusion, brine injection, upconing

Methods and technology: user interfaces, 3D graphics, FEM, solvers, parallel computing, technical optimization, calibration and parameter estimation, uncertainty analysis

Model coupling: development, application, calibration/validation, linking with MIKE software



Call for Papers

Abstracts may be submitted to the Organizing Committee before January 31, 2012. Please email your abstract (up to 300 words) in MS Word format to feflow2012@dhi-wasy.de, including information about author(s), organization(s), email address(es) and whether oral or poster presentation is preferred.

DHI-WASY will award free FEFLOW licenses for the best oral and poster presentations.

Conference Program (preliminary)

Sunday, September 2, 2012

- Preconference excursion: Historical waterworks in Friedrichshagen

Monday, September 3, 2012

- Registration
- Keynotes and topical sessions
- Poster presentations and software exhibition
- FEFLOW feature wish list

Tuesday, September 4, 2012

- Keynotes and topical sessions
- Panel discussion
- Conference dinner (boat trip)

Wednesday, September 5, 2012

- Keynotes and topical sessions
- Software presentations and workshops

Thursday to Friday, September 6-7, 2012

- Topical workshops

Training

FEFLOW Basics: This 3-day preconference course introduces flow and mass-transport simulation with FEFLOW.

Topical Workshops: The one-day workshops will cover the following topics:

- The FEFLOW 6 Standard user interface
- Geothermal modeling
- Programming interface IFM
- Density-dependent simulation
- Unsaturated flow
- Reactive-transport modeling
- Geological modeling using Leapfrog Hydro